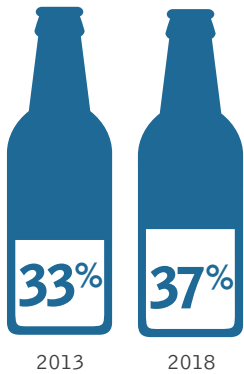




Alcohol and Marijuana

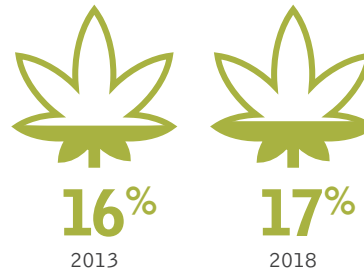


LIFETIME ALCOHOL USE



REPORTED USE
BETWEEN 2013–2018
STAYED STABLE

LIFETIME MARIJUANA USE



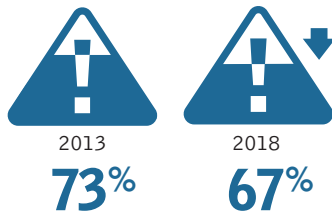
REPORTED USE
FROM 2013–2018
STAYED STABLE
WITHOUT SIGNIFICANT CHANGE

Marijuana was legalized for those aged 21+ in Colorado in 2014.

PERCEIVED RISK: ALCOHOL

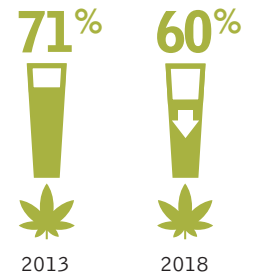


FROM 2013–2018,
PERCEPTION OF 'GREAT RISK'
IN REGULAR ALCOHOL USE HAS
GONE DOWN SIGNIFICANTLY



PERCEIVED RISK: MARIJUANA

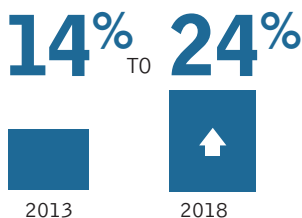
FROM 2013–2018,
PERCEPTION OF 'GREAT RISK'
IN REGULAR MARIJUANA USE HAS
GONE DOWN SIGNIFICANTLY



CURIOSITY



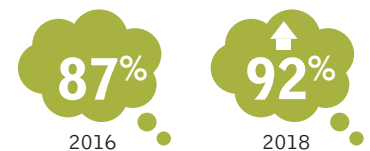
CURIOSITY TO TRY ALCOHOL HAS INCREASED
FROM



SOCIAL NORMS: PERCEPTION VS. REALITY

While marijuana's actual use stayed stable,

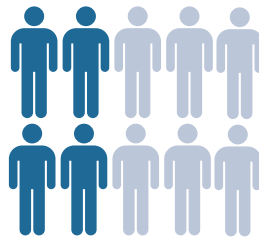
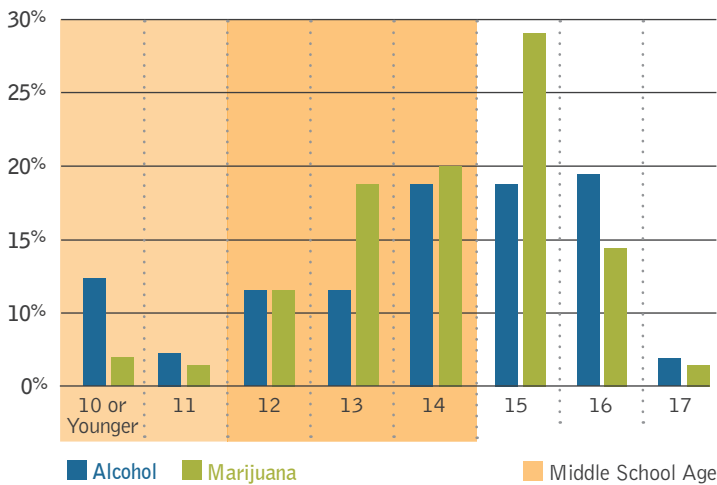
OVER-ESTIMATION
OF SCHOOLMATES' 30-DAY MARIJUANA USE
INCREASED
AMONG HIGH SCHOOL AGED YOUTH (15–17)
FROM 2016–2018



↑ Denotes Statistically Significant Difference

ALCOHOL & MARIJUANA: AGE OF FIRST USE

Majority of those surveyed who've tried alcohol and marijuana, did so before the age of 15. Prevention programming must begin early and be sustained into high school, creating opportunities for peer education and leadership.



4 in 10

of respondents who reported they had consumed alcohol **said they had first tried it when they were between 12–14 years of age** (middle school).



5 in 10

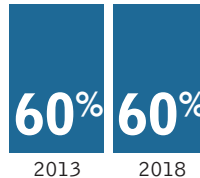
of respondents who have used marijuana **said they had first tried it when they were between 12–14 years of age** (middle school).



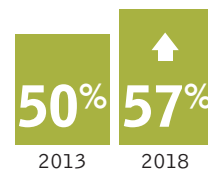
EASE OF ACCESS

Those youth reporting that it is **'Very' or 'Somewhat Easy' to access alcohol stayed relatively the same** between 2013 to 2018, **but those reporting it was easy to access marijuana increased** in that same time period.

ALCOHOL EASE OF ACCESS



MARIJUANA EASE OF ACCESS

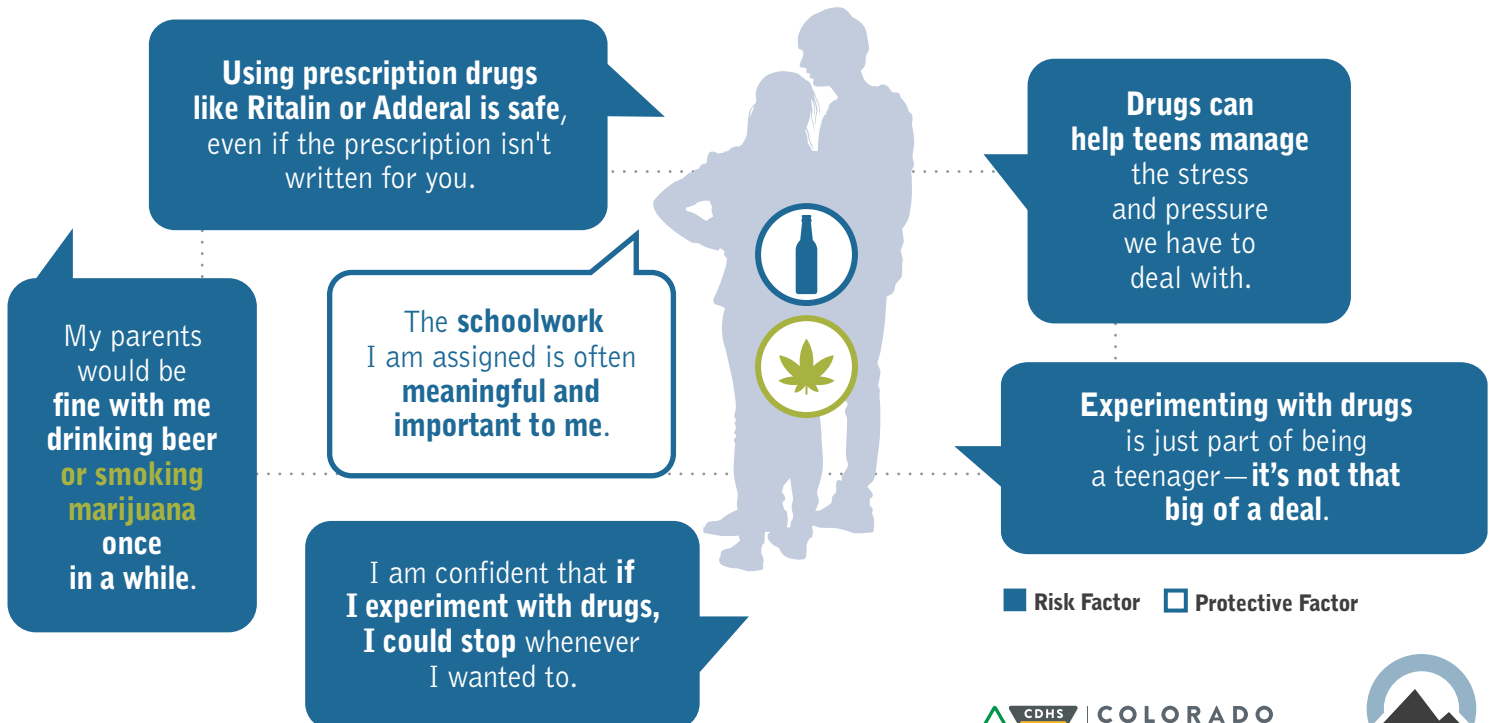


vs.

'Very' or 'Somewhat Easy' Access Reported

RISK AND PROTECTIVE FACTORS

The following factors have **strong influence on an individual's use and curiosity to use** alcohol and marijuana:



COLORADO
Office of Behavioral Health
Department of Human Services

